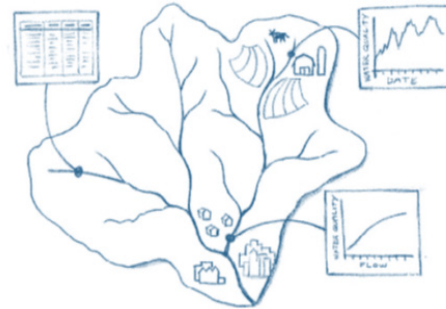


Get Involved!

- Subscribe to planning updates and watershed news at: <http://kettleriver.ca> (look for the form on the right that says “subscribe”)
- Find out about public events at <http://kettleriver.ca/calendar>
- Follow us on Facebook: <https://www.facebook.com/KettleRiverStartsHere>
- Tell us what you hope we achieve with the plan: <http://kettleriver.ca/2012/06/survey/>
- Invite us to speak to your community or organization: email plan@kettleriver.ca

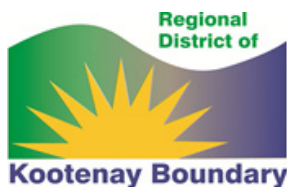


Contact us.

Grace McGregor
Advisory Group
Chairperson
RDKB Area ‘C’ Director
250.447.9293

Graham Watt
Project Coordinator
250.442.2708 ext 225
plan@kettleriver.ca
<http://kettleriver.ca>

Mark Andison
RDKB Director of Planning
& Development
1.800.355.7352
mandison@rdkb.com



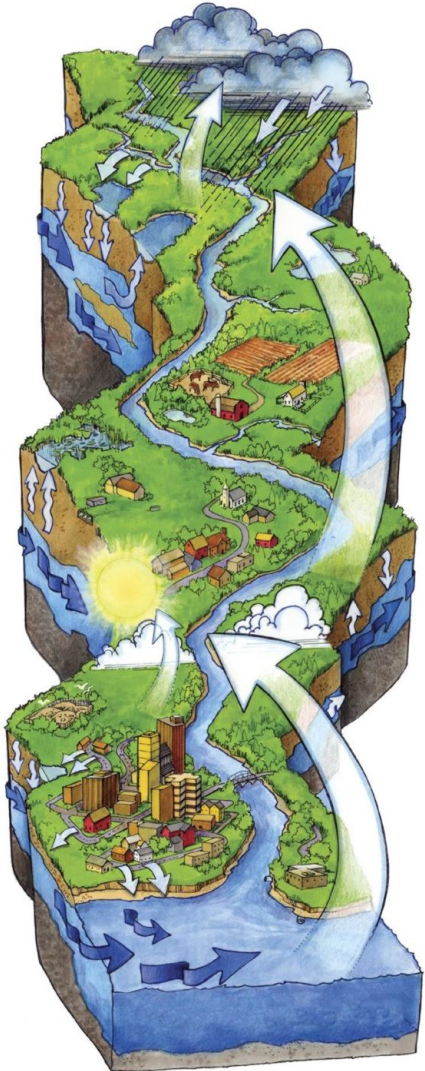
Kettle River Watershed Management Plan

“The Kettle River Starts Here”
kettleriver.ca

Regional District of Kootenay Boundary | rdkb.com

Why make a watershed plan?

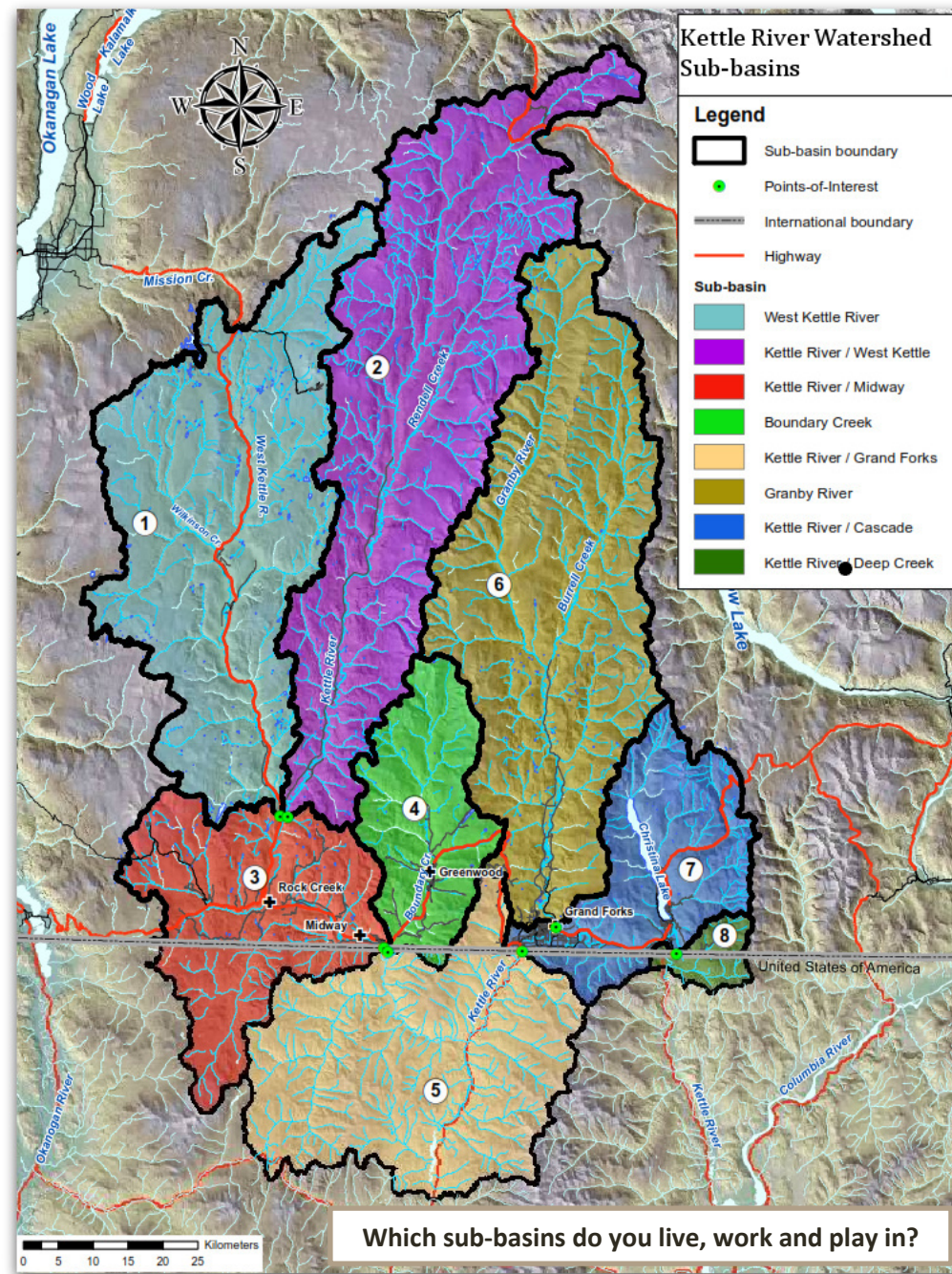
Residents of the Boundary region are increasingly concerned about the health of the Kettle River watershed. Their worries include diminishing flows in the summer, water quality impacts from different land uses and the health of the aquatic ecosystem. Proposals for further extraction have attracted attention from outside the basin - the Outdoor Recreation Council of B.C. ranked the Kettle River the most endangered river in B.C. in 2010 and 2011. Therefore, the Regional District of Kootenay Boundary is developing a watershed management plan for the Kettle River with broad participation from other agencies and stakeholders.



The Kettle River Watershed means all the land, forests, farms, wetlands and streams that drain into the Kettle River. The watershed isn't something that comes from somewhere else and goes somewhere else – it starts right here with our backyards and our decisions.

This watershed plan will provide a strategic vision for the watershed with concrete actions to be undertaken by the various agencies and stakeholders who have a role in the management of water and land resources within the basin, including individual citizens.

This is our chance to define how we protect and enhance clean, reliable water and healthy ecosystems while planning for the future of our communities.



What is the state of the Kettle River Watershed?

The Regional District of Kootenay Boundary commissioned a “State of the Watershed” report that summarizes information about water quality, flow, and aquatic ecosystems. Find out more at <http://kettleriver.ca/2012/06/state-of-the-watershed/>