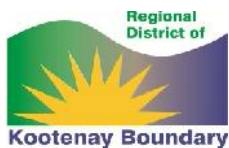




# Kettle River Watershed Management Plan

**Project Update - April 24, 2013**  
Graham Watt, Project Coordinator



Kettle River Watershed Management Plan

*The Kettle River Starts Here*

# Overview

- Progress on Watershed Management Plan
- Key findings from Stakeholder Engagement
- What's next?
  - Riparian Threat Analysis
  - Kettle River WaterWise



Kettle River Watershed Management Plan  
*The Kettle River Starts Here*

# Kettle River Watershed Management Plan

RDKB initiative to

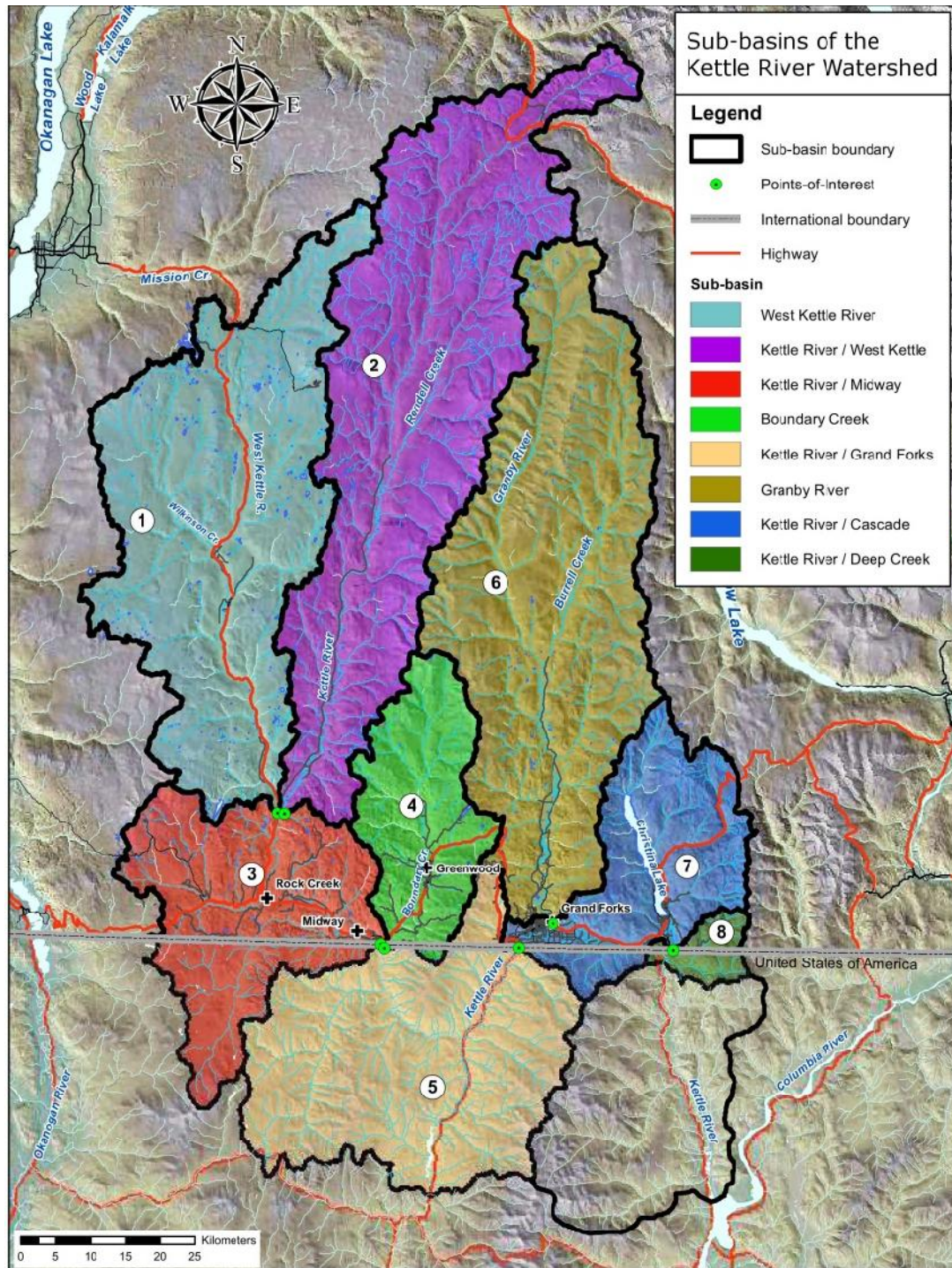
- *study* water supply, use, quality, and aquatic ecosystem (Phase 1 “State of the Watershed”) – <http://kettleriver.ca/state-of-watershed>
- *plan* for the future – develop recommendations with stakeholders on policy, planning, and stewardship (Phase 2 “Watershed Management Plan”)
- Supported by great network of people (SC, SAG, TAC, RWG...)



Kettle River Watershed Management Plan

*The Kettle River Starts Here*





Map showing the sub-basins of the Kettle River Watershed, including the legend, scale bar, and north arrow.



## Understanding watershed issues

- State of the Watershed
- Surveys
- Public meetings
- June-December 2012



## Developing Goals, Objectives, Priorities

- Issue analysis
- Scenario analysis
- Public engagement
- January-June 2012



## Watershed solutions

- Working Groups
- Public involvement
- July-December 2013



## Draft watershed plan

- Working Groups
- Technical advice
- Public engagement
- October 2013-March 2014



## Implementation planning

- Governance planning
- April-June 2014
- And celebration!



# KEY FINDINGS

- Surface water: Aug-Sept flows lowest in year; worse in drought years & impacted by surface and groundwater withdrawals. Actual surface use less than licensed.
- Groundwater: Major suppliers use it instead of surface water; connected to surface water; data gaps outside Grand Forks
- Water Quality: SW generally fair-good except for temperature; GW has nitrate issues in GF; little data in northern 2/3 of basin or tributaries
- Aquatic Life: Natural conditions limit fish; impacted by withdrawals in dry years; work needed on potential to improve habitat and state of riparian areas



Kettle River Watershed Management Plan

*The Kettle River Starts Here*





# ENGAGEMENT – KEY FINDINGS

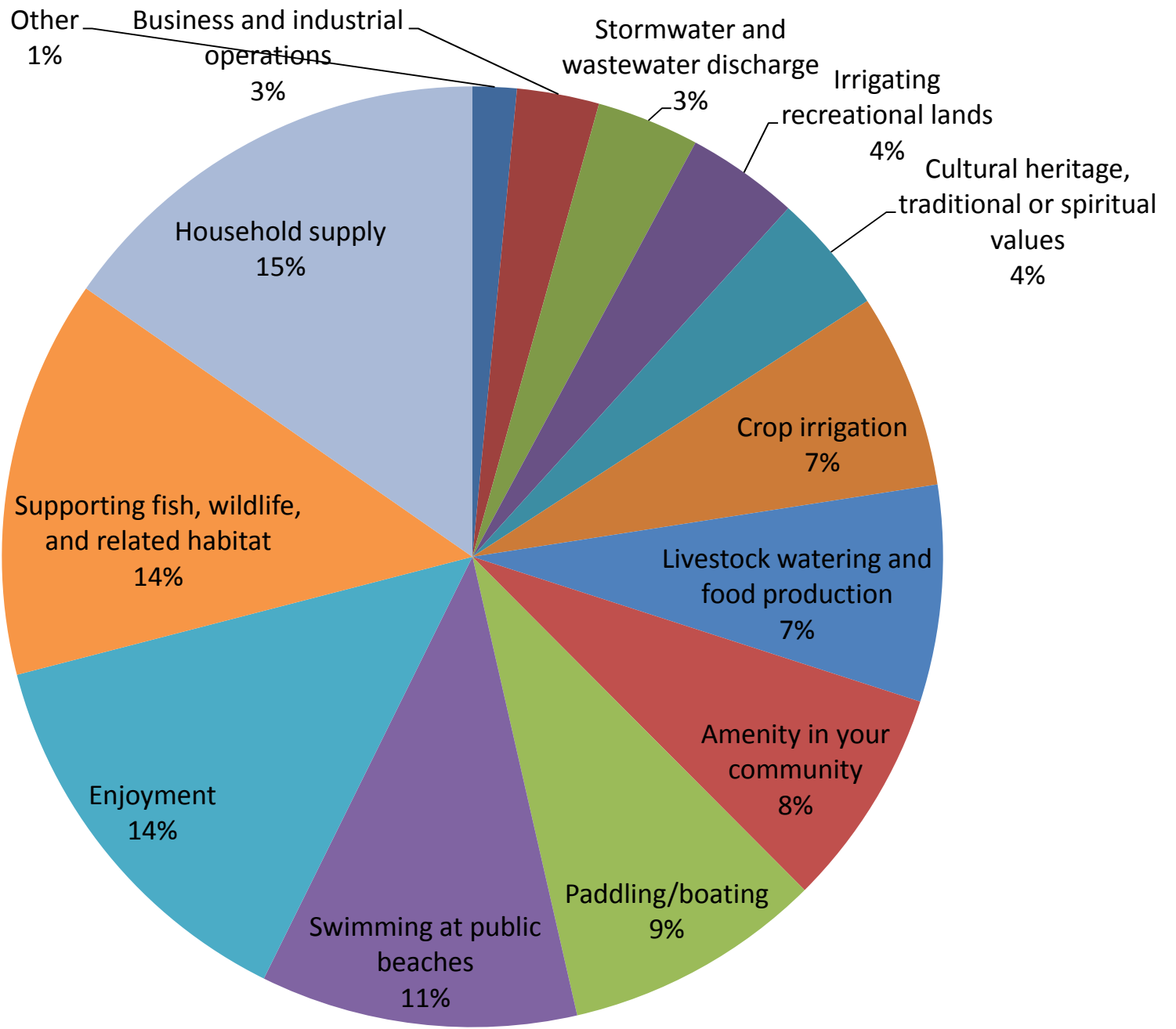


Kettle River Watershed Management Plan

*The Kettle River Starts Here*







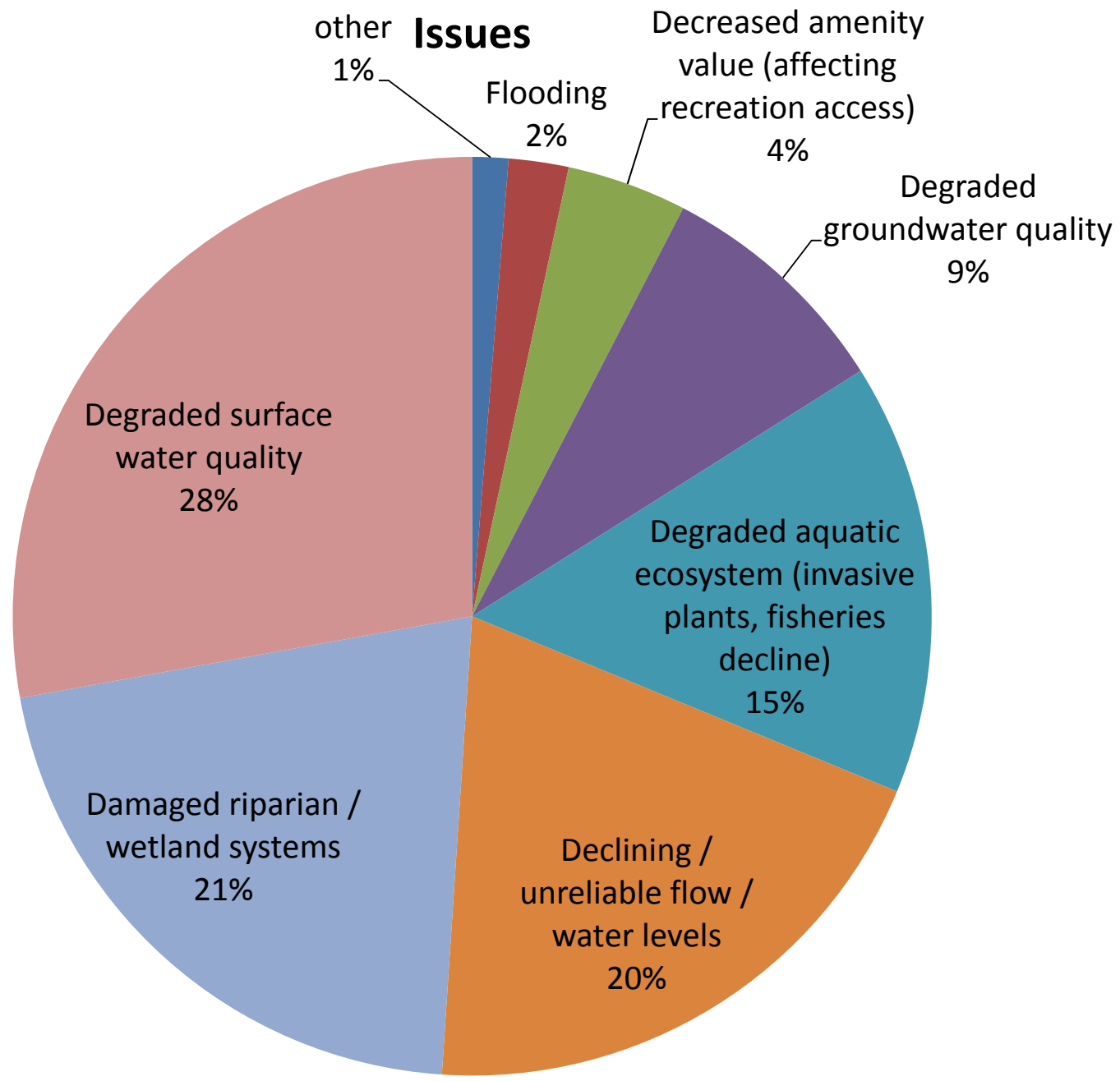
# Draft Outcomes & Goals

- Healthy Aquatic Ecosystems
  - *Adequate flow regimes & water levels to sustain aquatic life*
  - *Good water quality to sustain aquatic life*
  - *High habitat quality in wetlands, riparian areas and associated uplands to sustain native biodiversity & aquatic life*
- Safe & Secure Water Supporting Healthy Communities
  - *Safe and secure drinking water*
  - *Abundant opportunities for safe water-based recreation and quality leisure activities*
  - *Abundant opportunities for enjoyment and expression of spiritual, cultural, heritage and aesthetic values*
- Reliable, Quality Water Supplies Supporting a Sustainable Economy
  - *Adequate water quality to support current and future uses*
  - *Reliable, secure water supplies to support sustainable levels of us*

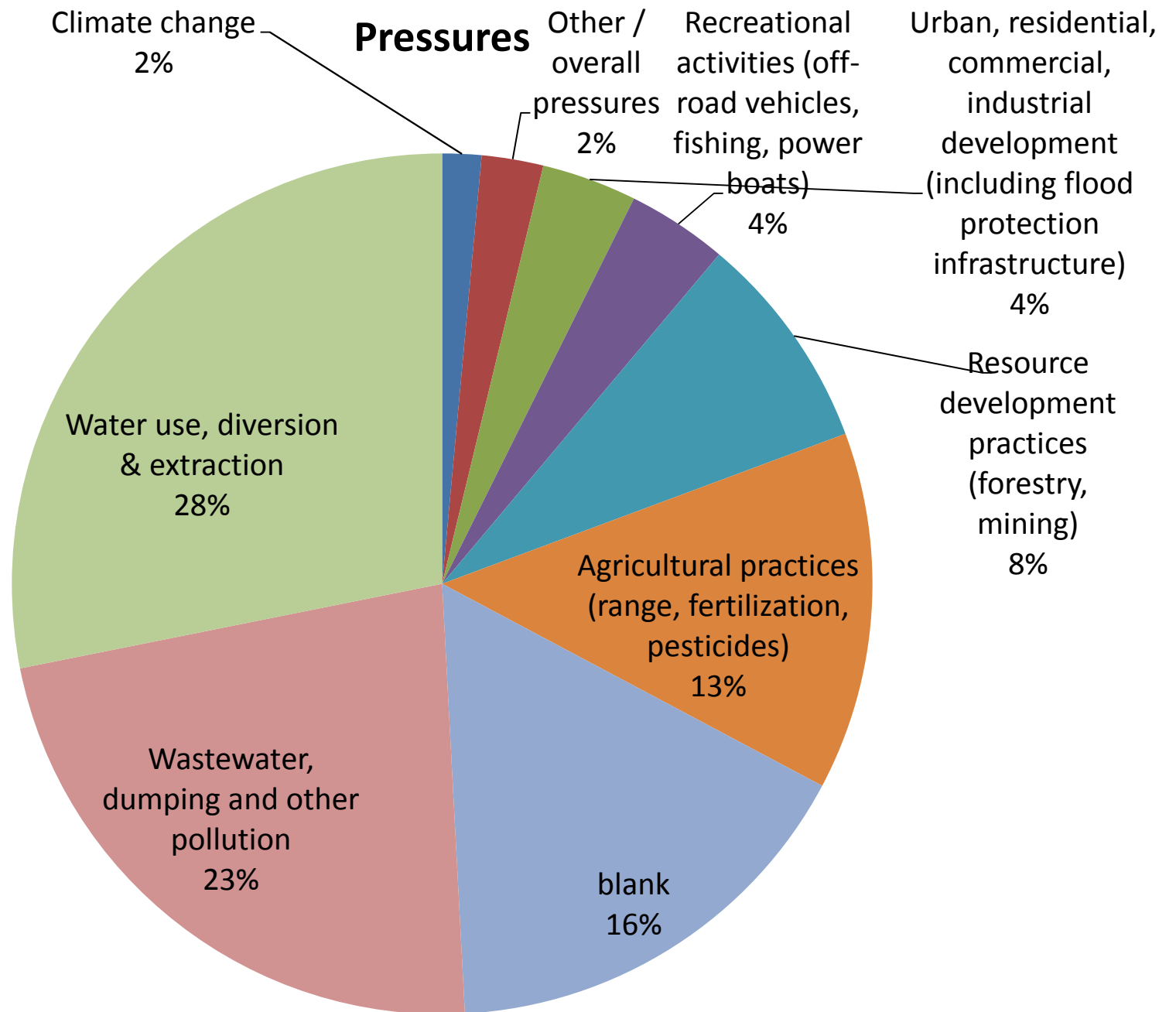


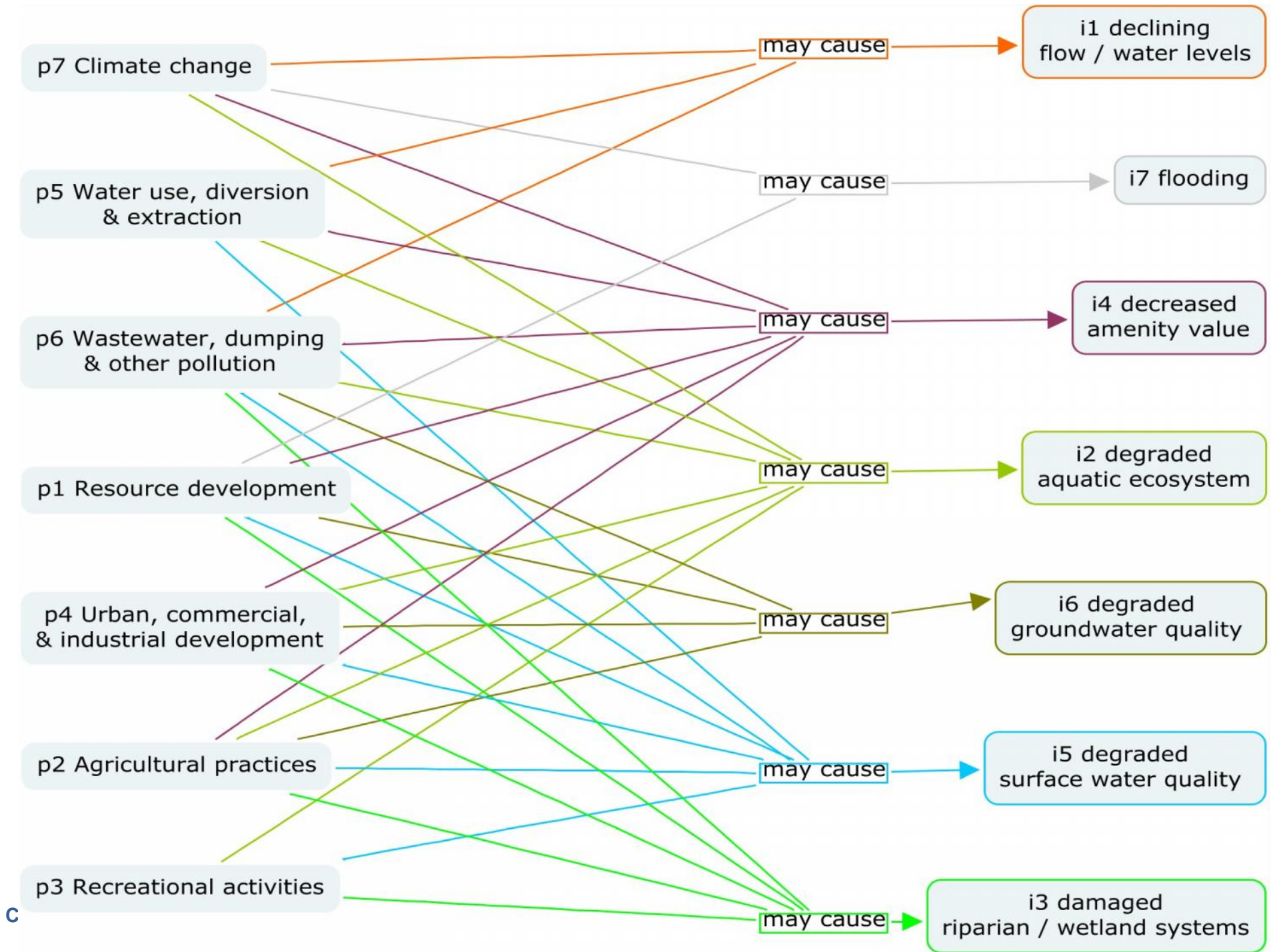
Kettle River Watershed Management Plan

*The Kettle River Starts Here*

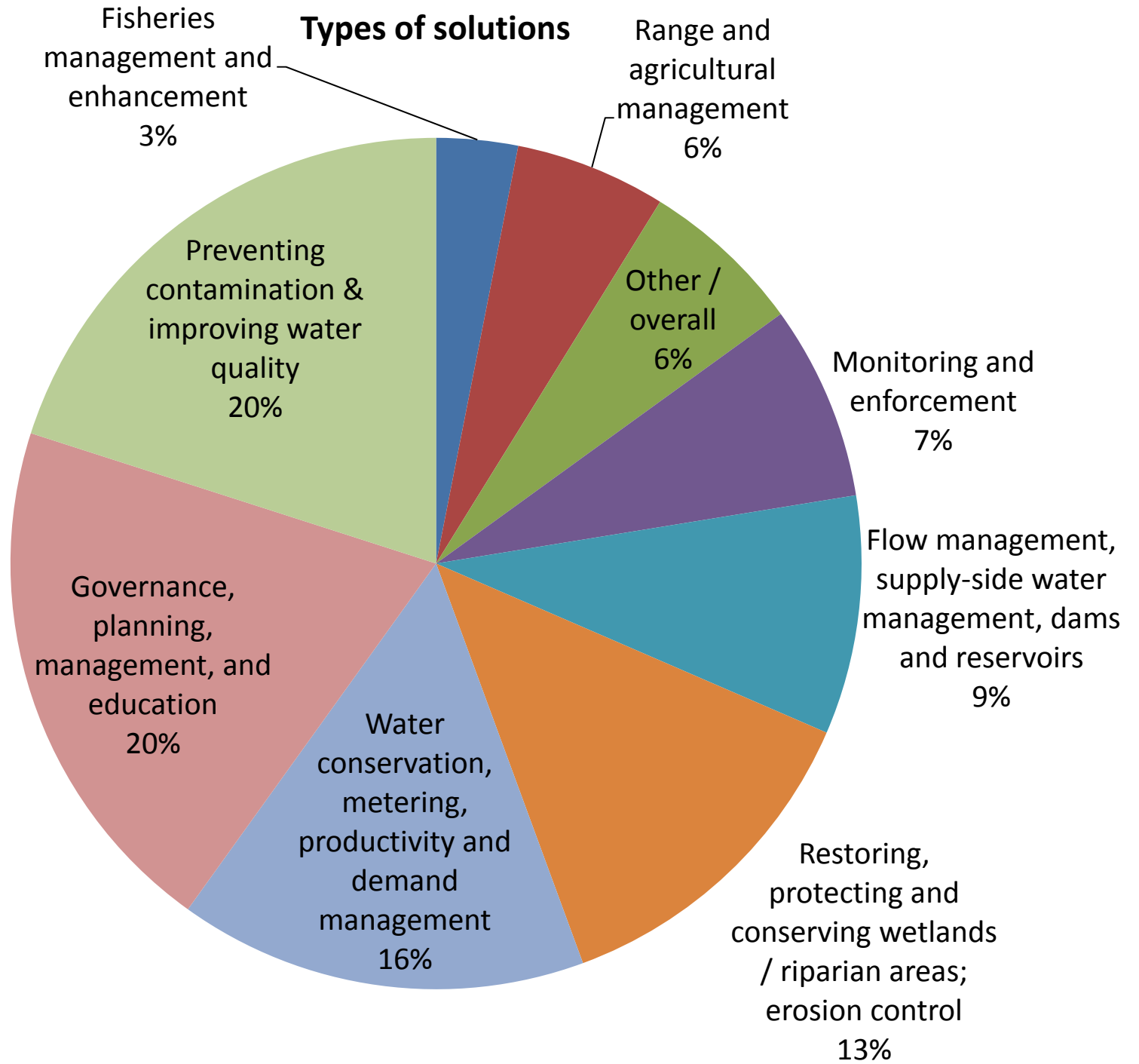








### Types of solutions





# Constraints

- Lack of money, resources and capacity
- Lack of economic values / connections
- Excessive individual freedom, competing interests
- Lack of knowledge, data and perspectives
- Lack of public ownership, interest and understanding
- Insufficient leadership, governance, oversight and regulation (including local government); inconsistent policy application
- Global warming



# Riparian Working Group

- High level of public concern, but
- Major data gaps about current conditions
- Riparian Working Group established
  - gather data
  - consider policy needs and
  - study management recommendations



Kettle River Watershed Management Plan

*The Kettle River Starts Here*

# Riparian Threat Analysis

- Application to SIBAC (successful) by Granby Wilderness Society (w/ Riparian Working Group)
- Computer mapping overlay analysis of stream systems, riparian areas, roads, vegetation, land use, species at risk
- Investigation of historical conditions (old photos) and site visits to old streambank restoration projects
- Prioritization of sites for conservation, restoration and follow-up assessments

Site-specific assessments or habitat mapping (2014-2015)

Recommendations for management, protection, and restoration (2013-2015)

- Watershed Management Plan
- Restoration plans, conservation agreements



Other funding from RDKB Electoral Areas, Village of Midway, City of Grand Forks (pending)

In-kind from local, provincial, federal government and multiple stakeholders



Kettle River Watershed Management Plan

*The Kettle River Starts Here*



# “Kettle River WaterWise”

- New initiative to promote water stewardship across Boundary
- Education programs, demonstration projects:
  - Water conservation
  - Groundwater protection (septic, wells)
  - Riparian stewardship
- Many partners, including GF Rotary, RDKB, City of Grand Forks



Kettle River Watershed Management Plan

*The Kettle River Starts Here*

# Other Next Steps

- Water supply & demand scenario analyses
- Working group on storage opportunities
- Other studies as recommended by State of the Watershed & Technical Advisory Committee



Kettle River Watershed Management Plan  
*The Kettle River Starts Here*

need... more... feedback...

<http://kettleriver.ca/what-we-heard>



Kettle River Watershed Management Plan  
*The Kettle River Starts Here*