

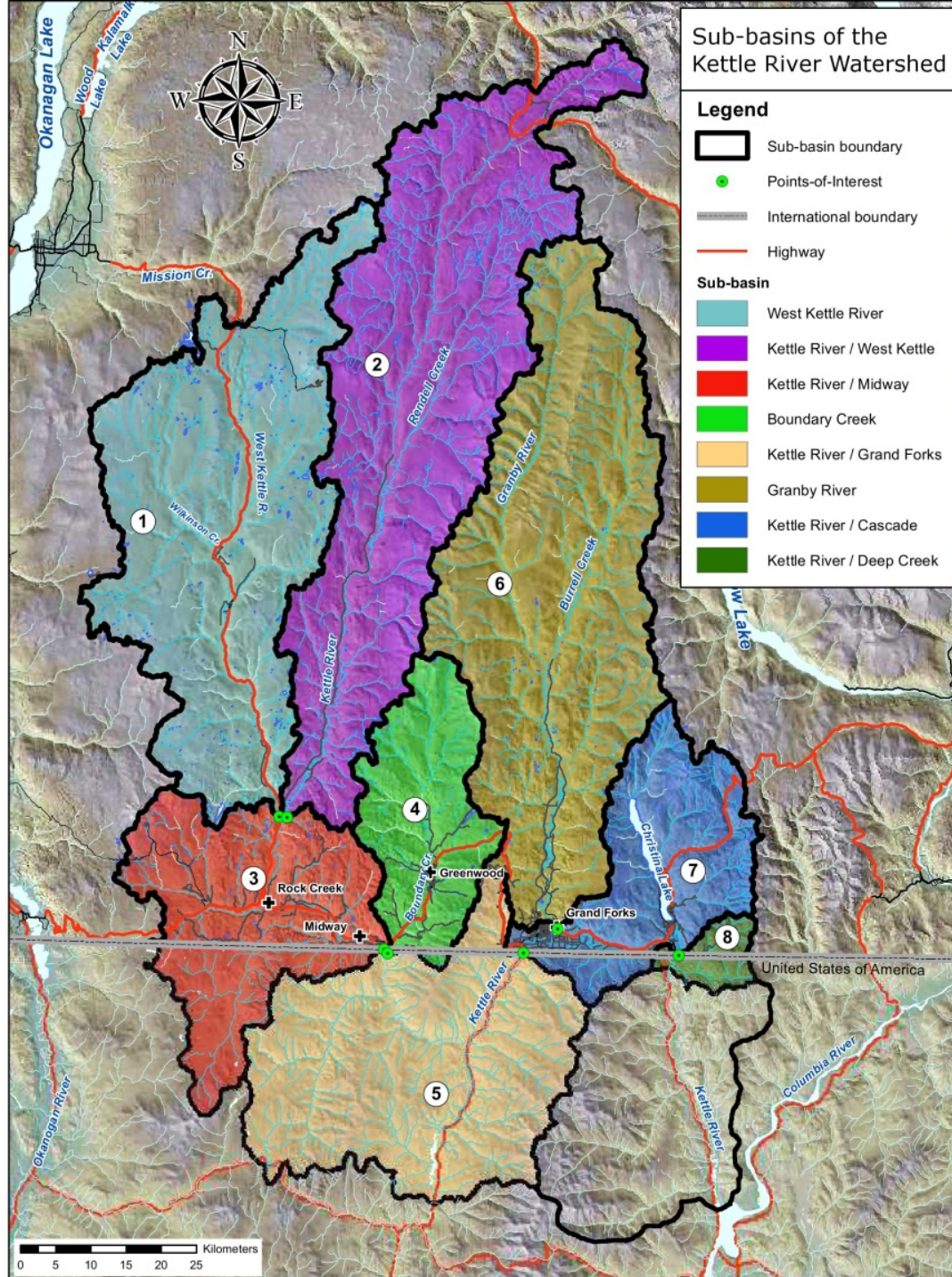


# Climate change and water in the Boundary: impacts and options

## Flood, Fire & Famine – Forum on Climate Change Resilience in the Boundary

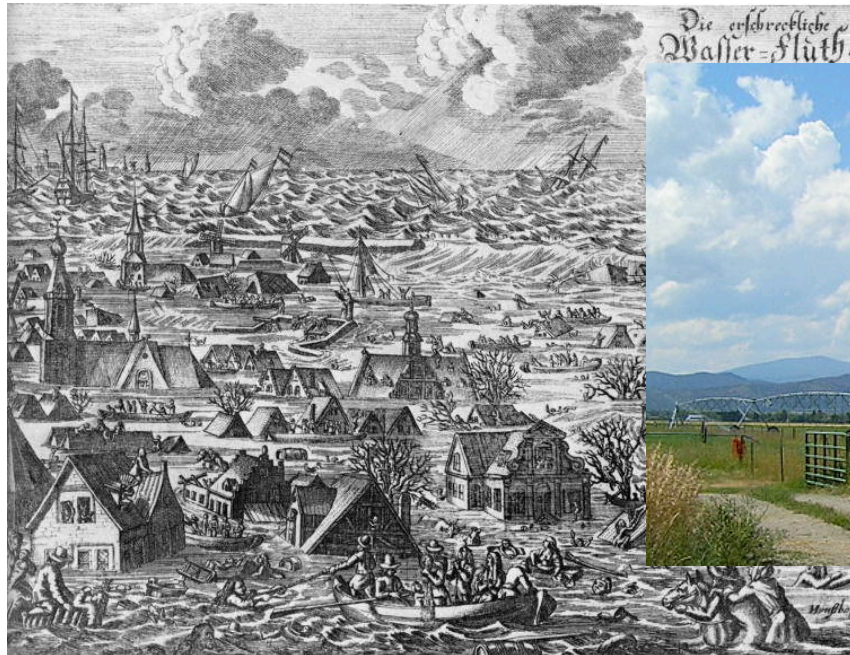
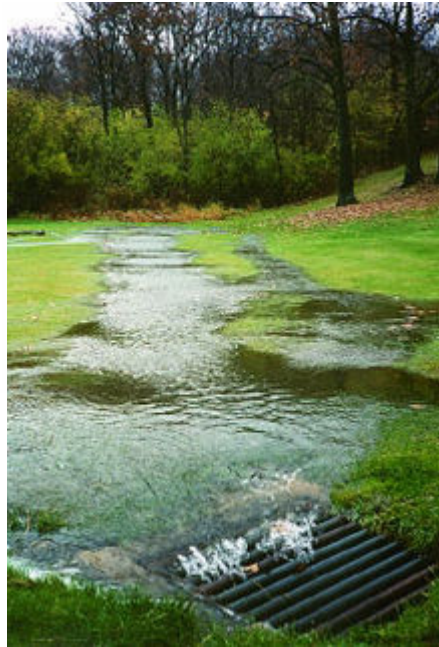
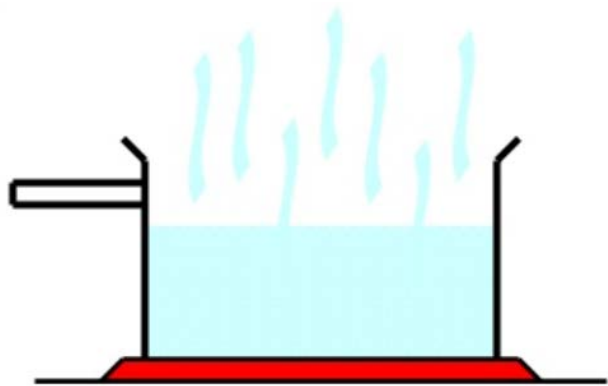
Graham Watt, Project Coordinator

# Kettle River Watershed Management Plan





[illegible]





# Promoting a culture of water conservation

- Impact: increased demand for water with less certain supply
- Strategy: Increase awareness & ability to conserve water
- Opportunities:
  - Water suppliers and agricultural agencies promote efficient irrigation systems, practices, and alternative cropping
  - Municipalities promote home/business scale water capture, storage (rain barrels, cisterns), and reuse (grey water) through education, technical support, and incentives



## Stepping back from the water

- Impact: Changes in frequency and severity of landslides, floods and river erosion
- Strategy: increase resilience of shorelines and floodplains through community-based planning
- Opportunities:
  - Implement laws and policies that restrict development and promote healthy vegetation in riparian buffer areas of streams and lakes
  - Identify flood hazard, slope stability hazard and streamflow erosion hazard areas for controlling development and 'buying out' over the long term





*We share one atmosphere, and we truly hold a shared responsibility for both reducing the greenhouse gas emissions that contribute to climate change, and supporting efforts to help vulnerable communities adapt to, and build resilience to, the effects of climate change*  
- Heather Grady, Rockefeller Foundation