

Economics, climate change and community

Sept. 2013

Prepared by:

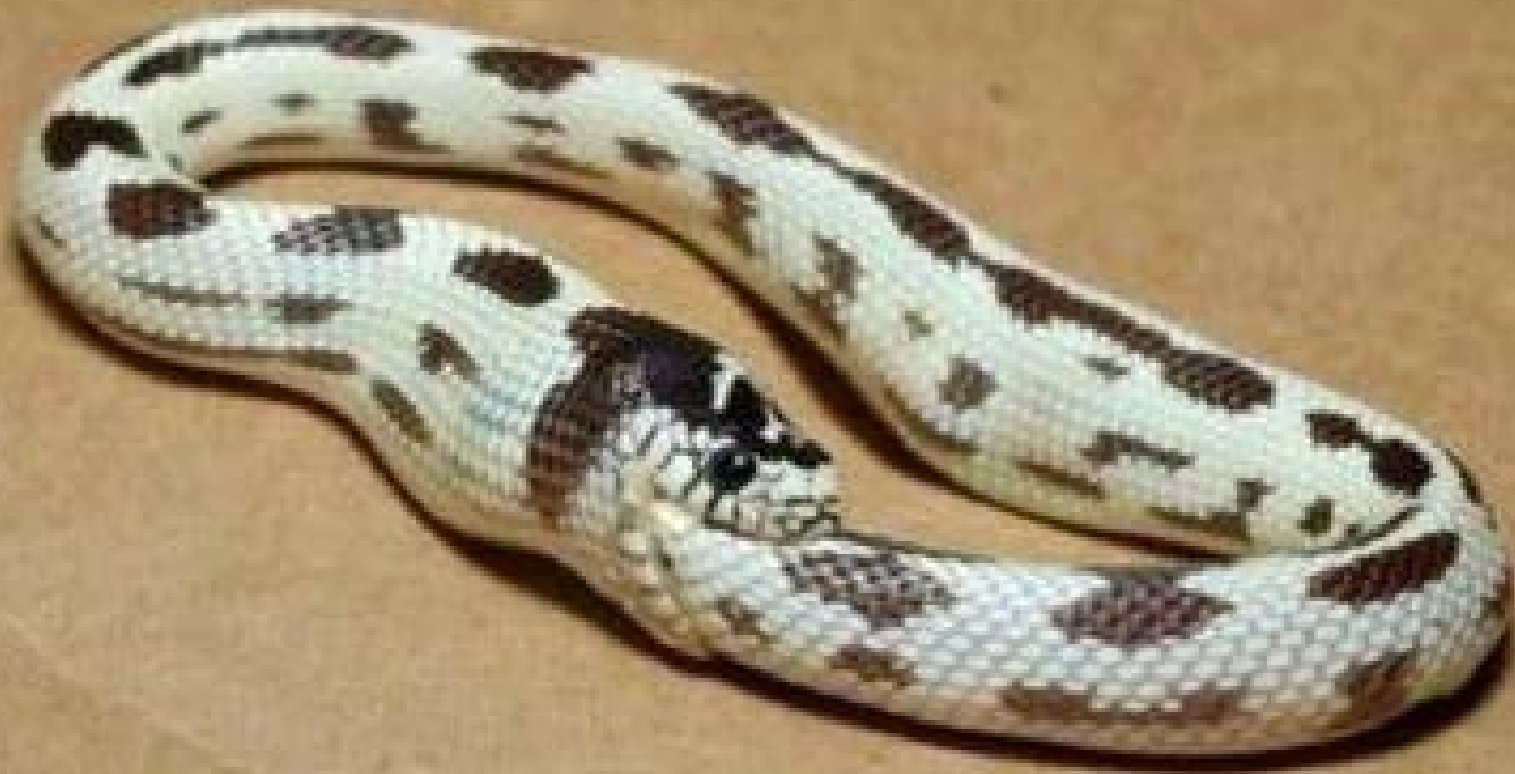


Thirsty

For Extreme Western Lifestyle



Dominant Economy: Continual Growth



Do we feel powerless?



REMEMBER!!!



**Citizens do have power:
if we work together**

“...community built solutions...”

Vancouver Island & UVic food solutions

ISLAND TASTE SENSATIONS PROJECT New Product Development Initiative ? PREPARED BY FRESH IDEAS & SOLUTIONS INC.

THE CHICKEN & VEGETABLE VALUE CHAIN

SUPPLY SIDE

Island Farmhouse Poultry often has excess meat that is available for grinding to be cooked and converted into a pizza topping or other items that use cooked ground chicken. Vegetables are also available for processing into either a cooked, sliced product or diced, blanched frozen product ready for addition onto pizzas and other associated foodservice products. Adding value to both ingredient types increases demand and processing requirements.



PROCESSOR

Processing the ground chicken meat and the vegetables will require a commercial kitchen or manufacturing facility dedicated for these purposes. Currently no commissary type facility is available on Vancouver Island. This opportunity is being investigated for financial feasibility.



DEMAND SIDE

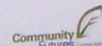
One of the first committed demand side participants, Hot House Pizza has expressed interest in pizza toppings for pizzas sold through their multiple outlets around Victoria. Ambrosio Wholesale is interested in distributing the toppings to other interested parties through Vancouver Island.



A project of the Vancouver Island Heritage Foodservice Co-operative Association



Funded in whole or part
through the Canada-British
Columbia Labour Market
Development Agreement



Western Economic
Diversification Canada

Diversification de l'économie
de l'Ouest Canada

Canada

“...community built solutions...”

T’Sou-ke First Nation



“...community built solutions...”
Kimberly Sun mine



“...community built solutions...”
...linked co-op model from Spain



...community built solutions...”

Emilia Romagna



CRITICAL INGREDIENTS

- ♦ Driven by
 - ♦ Desperation
 - ♦ Visionary leadership
 - ♦ Ideological passion
- ♦ Presence of an organizer who knows how to put together co-operative value chain systems
- ♦ Commitment by the people in the community to INVEST

Christina Lake

Developing the

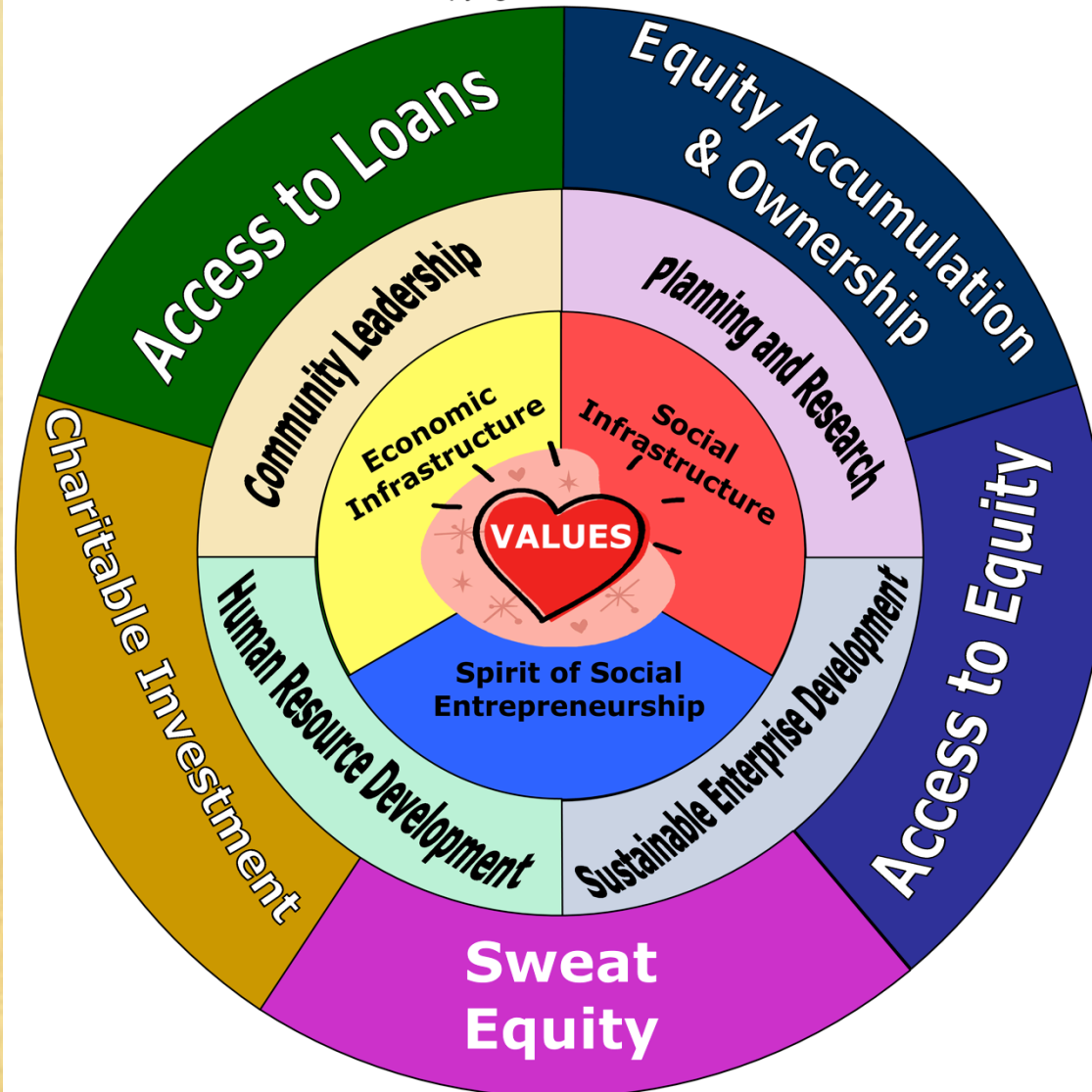
First

Community Venture Capital
Corporation

in BC

Community Economic Development Heart Chart

Copyright ESEL 2006 ©



**Imagine: working
together to create a
climate resilient Boundary**

